

# FTV



## DESIGN FEATURES

The R-K FTV series float valve is designed to provide maximum efficiency in controlling the liquid level in storage tanks. They can be installed by using a tank adapter directly through the tank wall or with simple piping over the top edge of the tank. The FTV will automatically keep your tank at desired level, preventing overflow by providing positive shutoff. Dynamic seal o-rings are teflon encapsulated viton for long life and trouble free operation. The reliability of this valve has been proven in thousands of installations involving acids, caustics, plating solutions, clean and waste water.

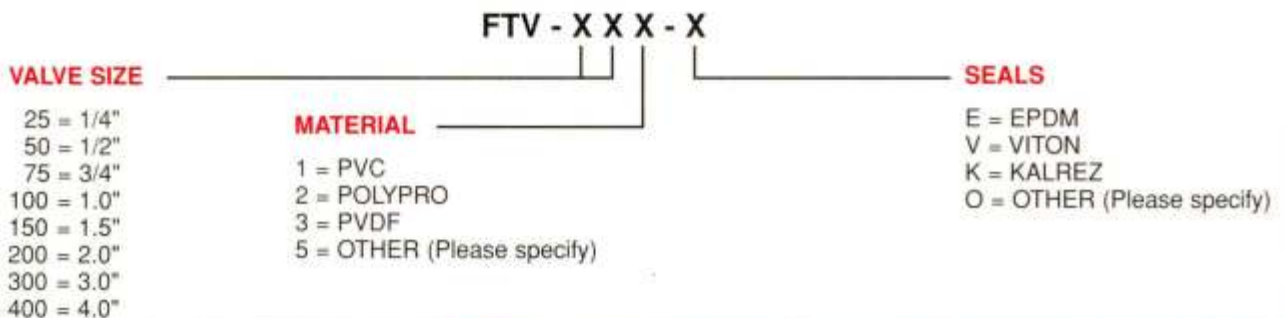
## FLOAT VALVE

### SPECIFICATIONS

Operating Pressure	0 to 80 PSIG	Temperature Range	0 F to 140 F for PVC 0 F to 180 F for POLYPRO 0 F to 280 F for PVDF 0 F to 340 F for TEFLON
Float	Molded Polypropylene (1/2"-3/4"-1" sizes) Expanded Polyethylene (1/4"-1 1/2"-2"-3"-4" sizes)	Valve ports	1/4" to 1" Valve FNPT 1.5" to 4" Valve MPT All valves are fully ported
Material	Valve Body: PVC Type 1, Grade 1 Polypropylene PVDF	Mounting Method	(4) 1/4"-20 tapped holes for standard machined valve body (1/4" to 1.00")
	Seal: EPDM VITON KALREZ		
	Dynamic Seal: Teflon Encapsulated Viton		

### ORDER INFORMATION

The chart below will specify R - K standard valves regarding valve size, valve material, and seal material. For special orders, please consult the factory for pricing and delivery information.



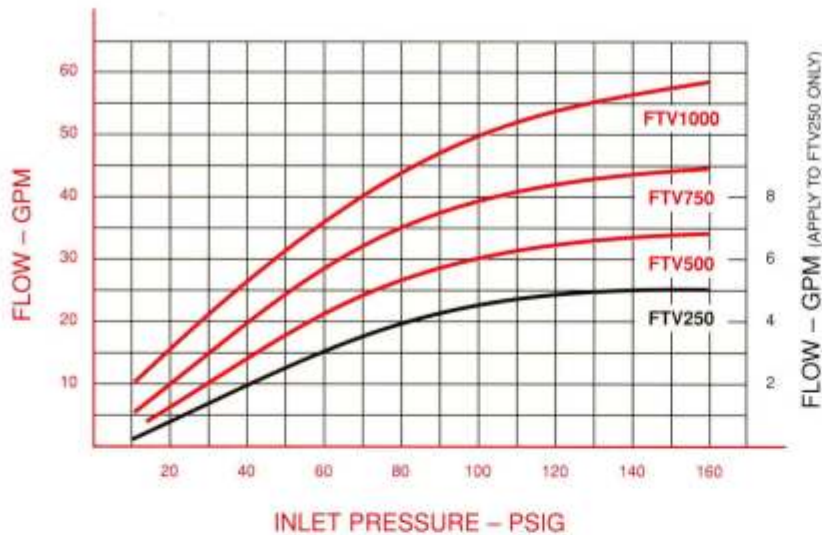
**R-K INDUSTRIES**



1120 E. LOCUST STREET  
ONTARIO, CA 91761

(909) 947-5227 • FAX: (909) 947-3039 • <http://www.rkvalve.com>

# ENGINEERING & PERFORMANCE DATA



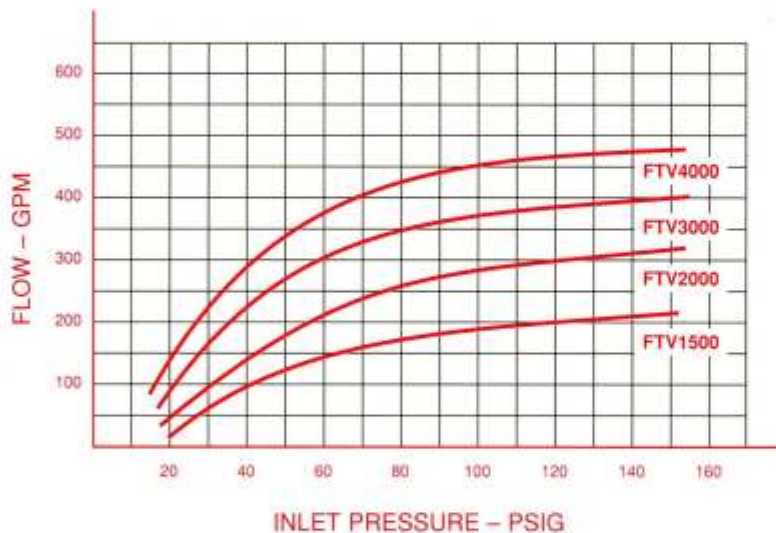
## NOTES

THE PERFORMANCE CURVES SHOW THE FLOW RATE OF FTV VALVES AT ITS FULLY OPEN POSITION. THESE CURVES CAN BE VARIED DEPENDING UPON THE FLOW AND THE PRESSURE CHARACTERISTIC OF EACH SYSTEM AND AT EACH DIFFERENT PRESSURE SETTING POINT.

TEST DATA WAS PERFORMED WITH 68 DEGREE F WATER, AND 160 PSIG MAXIMUM PRESSURE.

THESE PERFORMANCE CURVES WILL BE CHANGED WITH HIGHER VISCOSITY LIQUID AND/OR HIGHER TEMPERATURE.

CONSULT YOUR LOCAL SALES REP OR MANUFACTURER DIRECTLY FOR CUSTOM PRODUCTS OR SPECIAL APPLICATIONS.

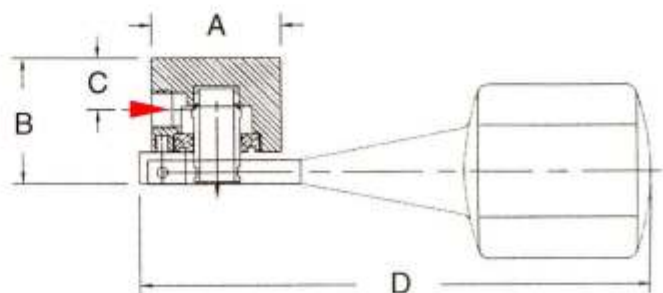


## DIMENSIONAL DATA

DIMENSIONS IN INCHES

Valve size	Ports	A	B	C	D	Cv
1/4"	FNPT	2.0	1.6	.4	10.0	.82
1/2"	FNPT	3.0	2.3	.6	12.0	3.46
3/4"	FNPT	3.5	2.84	.8	13.5	4.42
1.0"	FNPT	3.5	2.84	.8	13.5	5.86
1.5"	MPT	4.0	4.5	1.7	18.0	18.2
2.0"	MPT	4.0	4.5	1.7	18.0	25.4
3.0"	MPT	4.5	6.5	2.5	22.0	30.6
4.0"	MPT	7.0	7.3	3.3	24.0	35.8

(\*) Cv value @ 150 GPM



START TO OPEN: When the Float drop 6 degree from the horizontal position.  
 FULLY OPEN: When the float drop 18 degree from the horizontal position.

R-K INDUSTRIES



1120 E. LOCUST STREET  
 ONTARIO, CA 91761  
 (909) 947-5227 • FAX: (909) 947-3029 • <http://www.rkvalve.com>